

GEDORE

CAPTURE MANAGER




CAPTURE MANAGER Software installation

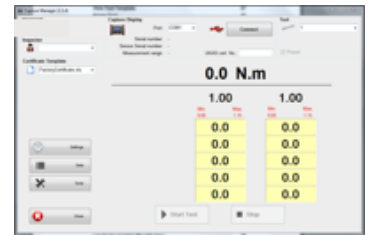
Important – Installation of the software should be completed with administrator rights. After install the software will operate with local user rights. Before installing a new version of Capture Manager, all previously installed versions should be uninstalled.

⚠ Warning back up any previously installed Capture Manager Databases before starting the install process, using the backup function.


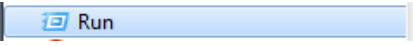

1. Plug the USB Flash Drive in to the PC's USB port
2. Windows Auto Play should appear. If this does not happen please proceed to Window version specific installation
3. Select "Open the folder to view the files"
4. Select the Capture Manager folder and double click on "**Setup.exe**"
5. The Capture Manager setup wizard should appear and guide you through the install process. If this window does not appear, then please follow the steps below

Windows XP

1. Click 
2. Click 
3. Type **D:START.EXE**, where D is the drive letter of your CD-ROM drive
4. Click 
5. The Capture Manager setup wizard should appear and guide you through the install process



Windows Vista/7

1. Click 
2. Locate and start the  command in the "Accessories" folder in "All Programs"
3. Type **D:START.EXE**, where D is the drive letter of your CD-ROM drive.
4. Click 
5. The Capture Manager setup wizard should appear and guide you through the install process.

The Capture Manager Instruction Manual is located in the Capture Manager folder on the USB Flash Drive (memory stick).

Order Code	Model
038700	Capture Display
038710	Capture Manager – PC Software
038720	Capture Programmer
038805	CS 2 Capture Sensor
038807	CS 5 Capture Sensor
038810	CS 10 Capture Sensor
038815	CS 25 Capture Sensor
038820	CS 50 Capture Sensor
038825	CS 100 Capture Sensor
038830	CS 250 Capture Sensor
038835	CS 500 Capture Sensor
038845	CS 1500 Capture Sensor
036226	CAPTURE Cable – CAPTURE Display to Custom Sensor
036246	CAPTURE Cable – CAPTURE Display to Capture Sensor
036251	CAPTURE Cable – CAPTURE Display to SDX Screwdriver
036256	CAPTURE Cable – CAPTURE Display to ETX Wrench
038771	Capture Sensor ISO 1500/90° Adaptor
D18205	Capture Sensor ISO-A Mount
038772	Capture Sensor Quick Change Plate



Gedore Torque Ltd
 Sales Hotline +44 (0) 1483 894 476
 or visit www.gedore-torque.com