

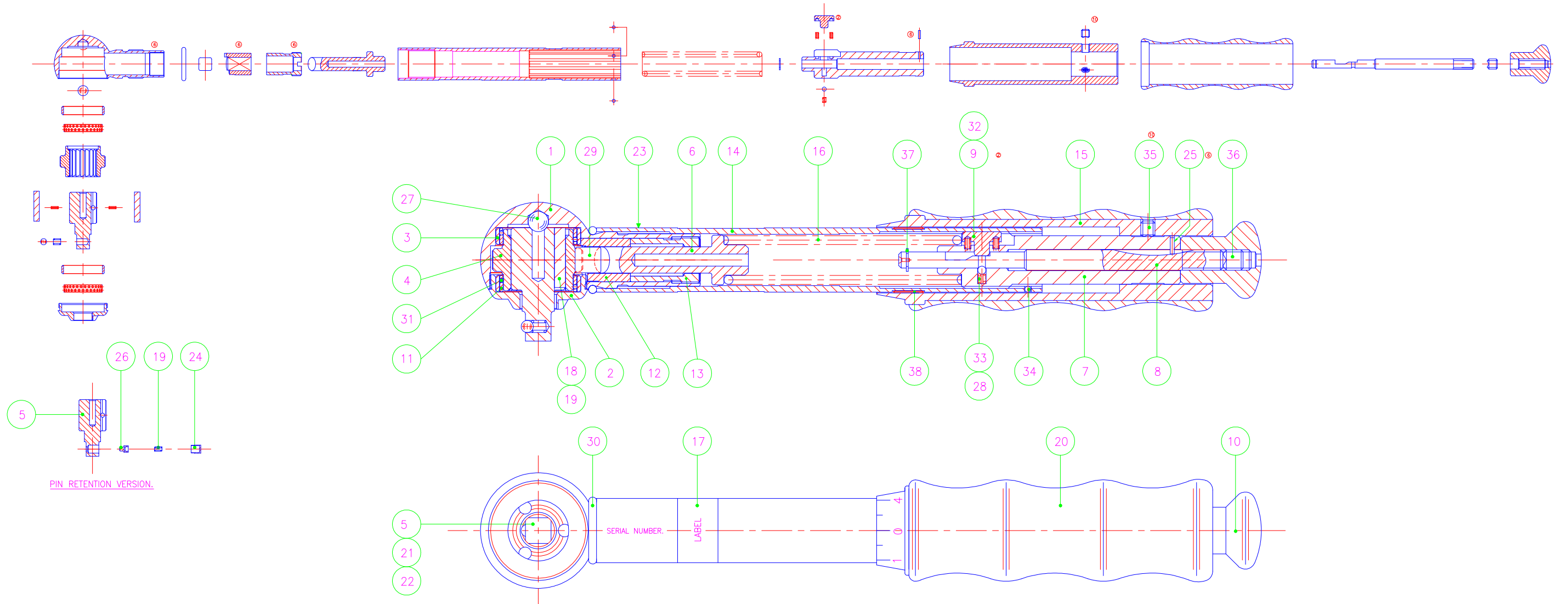
DO NOT SCALE

THIRD ANGLE PROJECTION

REMOVE BURRS & SHARP EDGES

METRIC DRAWING

EXPLODED VIEW - SCALE 1:1



| ITEM | PART NO | DESCRIPTION | QTY | REMARKS | ITEM | PART NO | DESCRIPTION | QTY | REMARKS |
|------|---------|-----------------------------------|-----|--------------------------------------|------|---------|--------------------------------|-----|---------------|
| 1 | C92560 | HEAD TSC/P | 1 | S/A B92680, B92690, B92700 & B92710. | 23 | A20711 | ESD LABEL (THIN) | 1 | |
| 2 | B92570 | FRONT BEARING HOUSING | 1 | | 24 | A59870 | CUP | 1 | PIN RETENTION |
| 3 | A94640 | LINER BUSH | 2 | | 25 | P22620 | DOWEL PIN 1.0mm DIA x 4.0mm Lg | 1 | |
| 4 | C92600 | CAM TSC/P 5 LOBE | 1 | B92691 | 26 | A64620 | PIN | 1 | PIN RETENTION |
| 5 | C97550 | CAM TSC/P 5 LOBE L/H | 1 | B92692 | 27 | P19860 | STEEL BALL 5mm | 1 | |
| | C92611 | SPINDLE TSC/P BALL RET | 1 | & ITEMS 21, 22 | 28 | A92800 | DETENT BALL SPRING TSC | 1 | |
| | C92612 | SPINDLE TSC/P PIN RET | 1 | & ITEMS 24, 25, 26 | 29 | P19820 | ROLLER C/CHROME | 1 | |
| | C97561 | SPINDLE TSC/P BALL RET L/H | 1 | & ITEMS 21, 22 | 30 | P19830 | O RING SILICONE 70 11 x 12 | 1 | RED |
| | C97562 | SPINDLE TSC/P PIN RET L/H | 1 | & ITEMS 24, 25, 26 | | P30720 | O RING NITRILE 70 11 x 12 | 1 | BLACK |
| 6 | A92620 | THRUST PIN (ANGLED) | 1 | | 31 | P21480 | STEEL BALL 1.0 DIA | 120 | |
| 7 | B92640 | ADJUSTING SCREW | 1 | | 32 | P19850 | SPRING | 2 | |
| 8 | B92650 | ACTUATOR ROD | 1 | | 33 | P11730 | STEEL BALL 2mm | 1 | |
| 9 | A92660 | LOCKING KEY | 1 | | 34 | P15040 | STEEL BALL 1.5mm | 2 | |
| 10 | A92760 | LOCK KNOB | 1 | | 35 | P16200 | SKT SET SCREW KCP M4x4 | 3 | |
| 11 | A94940 | BEARING CAGE | 2 | | 36 | P16820 | SKT SET SCREW M5 x 5 KCP | 1 | |
| 12 | A95160 | ROLLER GUIDE | 1 | | 37 | P18140 | CIRCLIP M1800-0040 | 1 | |
| 13 | A95170 | GUIDE BUSH | 1 | | 38 | P21490 | TOLERANCE RING | 1 | |
| 14 | B92592 | HANDLE BLACK | 1 | S/A B92690 | 39 | P19530 | CARTON | 1 | |
| | B92593 | HANDLE GREY | 1 | S/A B92680 | 40 | P19640 | INSTRUCTION LEAFLET | 1 | |
| | B92594 | HANDLE BLUE | 1 | S/A B92700 | | | | | |
| | | | | S/A B92710 | | | | | |
| 15 | A92721 | ADJUSTING SLEEVE BLACK - ENGRAVED | 1 | TSC 10 | | B92690 | HEAD/HANDLE ASSEMBLY TSC 5 | | |
| | A92722 | ADJUSTING SLEEVE BLUE - ENGRAVED | 1 | TSC 10 | | B92680 | HEAD/HANDLE ASSEMBLY TSC 10 | | |
| | A92731 | ADJUSTING SLEEVE GREY - ENGRAVED | 1 | TSC 5 | | B92710 | HEAD/HANDLE ASSEMBLY TSC 45 | | |
| | A92732 | ADJUSTING SLEEVE BLACK - ENGRAVED | 1 | TSC 5 | | B92700 | HEAD/HANDLE ASSEMBLY TSC 90 | | |
| | A92733 | ADJUSTING SLEEVE BLUE - ENGRAVED | 1 | TSC 5 | | | | | |
| | A92741 | ADJUSTING SLEEVE BLACK - ENGRAVED | 1 | TSC 90 + TSC100K | | B29570 | HEAD/HANDLE ASSEMBLY TSC 50K | | |
| | A92751 | ADJUSTING SLEEVE GREY - ENGRAVED | 1 | TSC 45 | | B29580 | HEAD/HANDLE ASSEMBLY TSC 100K | | |
| | A92752 | ADJUSTING SLEEVE BLACK - ENGRAVED | 1 | TSC 45 + TSC50K | | | | | |
| 16 | A92770 | MAINSRING | 1 | TSC 5 / 45 | | | | | |
| | A92780 | MAINSRING | 1 | TSC 10 / 90 | | | | | |
| 17 | A92133 | LABEL | 1 | TSC 5 / 45 | | | | | |
| | A92132 | LABEL | 1 | TSC 10 / 90 | | | | | |
| 18 | A12060 | PAWL | 2 | | | | | | |
| 19 | A59850 | PAWL SPRING (TSN 25/55) | 2 | | | | | | |
| 20 | A74752 | HANDGRIP (TSN 25) | 1 | | | | | | |
| 21 | A73670 | SPRING BALL CATCH | 1 | BALL RETENTION | | | | | |
| 22 | P15020 | STEEL BALL 3mm | 1 | BALL RETENTION | | | | | |

LUBRICATION DETAILS:

1. ROCOL A.S.P. TO BE APPLIED TO ROLLER, ROLLER GUIDE, AND THRUST PIN.
2. LIGHT MACHINE OIL TO LUBRICATE RATCHET MECHANISM.
3. TO LUBRICATE ADJUSTING SCREW COVER OUTSIDE WITH WHITE FM GREASE.
4. APPLY A SMALL AMOUNT OF ASP TO EACH END OF SPRING PRIOR TO ASSEMBLY.
5. ROCOL A.S.P. TO BE APPLIED TO ACTUATOR ROD WHERE LOCKING KEY TRAVELS.
6. ROCOL A.S.P. TO BE APPLIED WHERE ACTUATOR ROD TOUCHES ADJUSTING SCREW, AND WHERE LOCKING KEY TOUCHES ADJUSTING SCREW.

| | | | |
|--------|------|--|--|
| 12245B | 15 | | |
| 12134B | 14 | | |
| 11955B | 13 | | |
| 11402B | 12 | | |
| 10932B | 11 | | |
| 10826B | 10 | | |
| 10528B | 9 | | |
| 10143B | 8 | | |
| 9617C | 7 | | |
| 8322C | 6 | | |
| 8061C | 5 | | |
| 7936C | 4 | | |
| 7631C | 3 | | |
| 7266C | 2 | | |
| NEW | 1 | | |
| MOD | ISS. | | |

| | | | |
|---------------------------------------------------------------------------------------|-----------|----------------------|----------------------------------------------------------------------|
| PRINCIPAL DIMS ARE MILLIMETRES | SCALE 2:1 | MATERIAL SIZE & SPEC | USED ON ASSY No. |
| UNSPECIFIED TOLS:- 2 DEC. PLACE ± 0.10 1 DEC. PLACE ± 0.25 ANGLES ± 0.5 deg. | M/C AT | HEAT TREATMENT | DRAWN BY S.REDMAN DATE 12.07.95 AUTOCAD FILE LOCATION MHHDRC5\GA\ |
| FINISH AS STATED | | DRAWING No. D92940 | |

M.H.H. ENG. Co. Ltd.
BRAMLEY, GUILDFORD, SURREY.

DESCRIPTION:
GENERAL ARRANGEMENT.
TSC 5, 10, 45, 90.